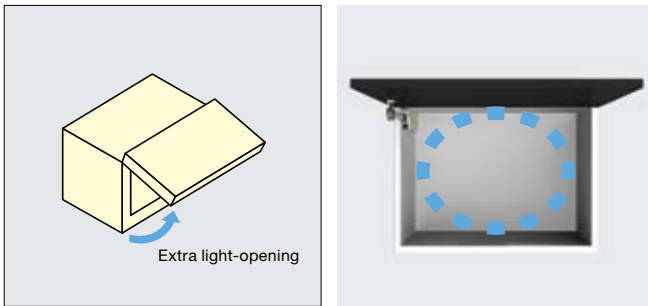


# EASY LIFT-UP STAY



**SLS-ELAN**

LID SUPPORTS



- Lapcon stay for upward-opening flap doors
- Lift-assist mechanism for extra light-opening
- Door stays in any desired position
- Damper equipped for soft & silent closing at the end
- Slim design and installed location maximizes space inside of cabinet
- Simple installation by aligning body to edge of cabinet
- Single or pair use allows wide range of door size / weight
- Recognized by LGA for 40,000 cycles
- Optional bracket for aluminum frame door available



## 3 functions on 1 stay

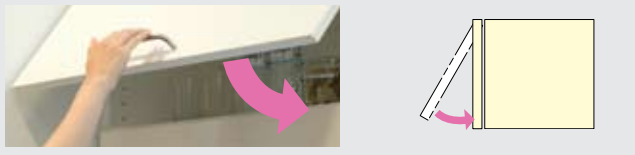
### 1. Lift-assist



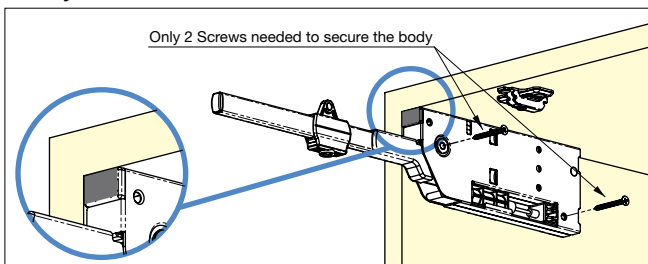
### 2. Free stop



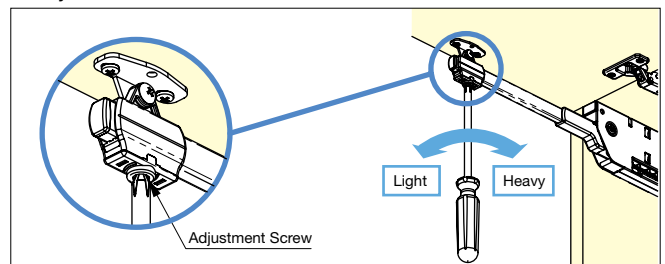
### 3. Soft-close

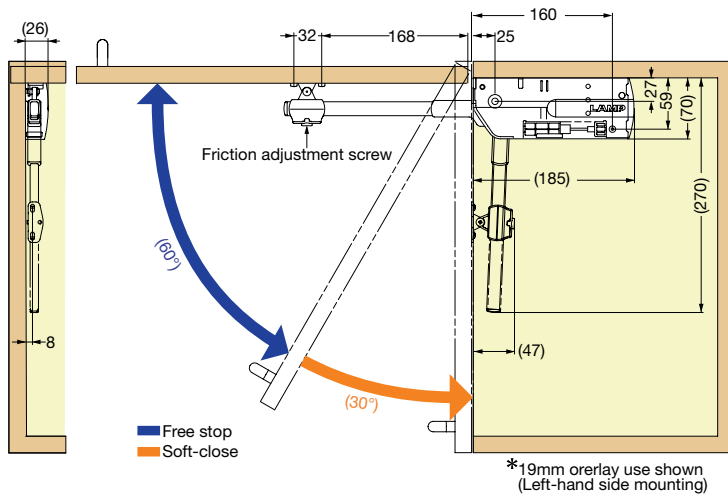


## Easy Installation



## Adjustment

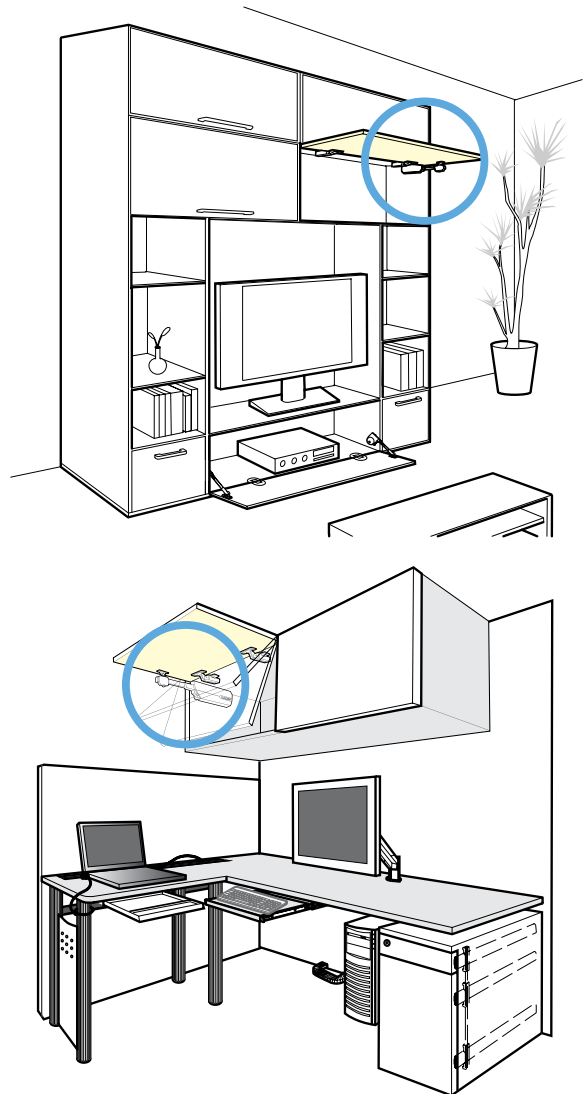




Door Weight Range Table (lbs.)

Door Height (inch)	Single use				Pair use			
	M-type		H-type		M-type		H-type	
	Min	Max	Min	Max	Min	Max	Min	Max
12"	8.0	10.8	10.8	14.5	16.0	21.7	21.7	29.0
13"	7.4	10.0	10.0	13.4	14.8	20.0	20.0	26.8
14"	6.9	9.3	9.3	12.4	13.7	18.6	18.6	24.9
15"	6.4	8.7	8.7	11.6	12.8	17.3	17.3	23.2
16"	6.0	8.1	8.1	10.9	12.0	16.3	16.3	21.8
17"	5.6	7.6	7.6	10.2	11.3	15.3	15.3	20.5
18"	5.3	7.2	7.2	9.7	10.7	14.4	14.4	19.3
19"	5.1	6.8	6.8	9.2	10.1	13.7	13.7	18.3
20"	4.8	6.5	6.5	8.7	9.6	13.0	13.0	17.4
21"	4.6	6.2	6.2	8.3	9.1	12.4	12.4	16.6
22"	4.4	5.9	5.9	7.9	8.7	11.8	11.8	15.8
23"	4.2	5.7	5.7	7.6	8.3	11.3	11.3	15.1
24"	4.0	5.4	5.4	7.3	8.0	10.8	10.8	14.5
25"	3.8	5.2	5.2	7.0	7.7	10.4	10.4	13.9
26"	3.7	5.0	5.0	6.7	7.4	10.0	10.0	13.4
27"	3.6	4.8	4.8	6.4	7.1	9.6	9.6	12.9
28"	3.4	4.6	4.6	6.2	6.9	9.3	9.3	12.4

\*Single or pair use depending on door size and weight.



Item No.		Type	Torque per piece	Material	Finish / Color	Weight (g)	Box (pcs)	Carton (pcs)
SLS-ELAN-MR	Right	M-type (Medium Duty)	55 ~ 75kg-cm (48 ~ 65lbs-in)	<ul style="list-style-type: none"> <li>Aluminum</li> <li>Steel</li> <li>ABS</li> </ul>	<ul style="list-style-type: none"> <li>Anodized</li> <li>Galvanized</li> <li>Light Grey</li> </ul>	600	20	100
SLS-ELAN-ML	Left							
SLS-ELAN-HR	Right	H-type (Heavy Duty)	75 ~ 100kg-cm (65~87lbs-in)					
SLS-ELAN-HL	Left							